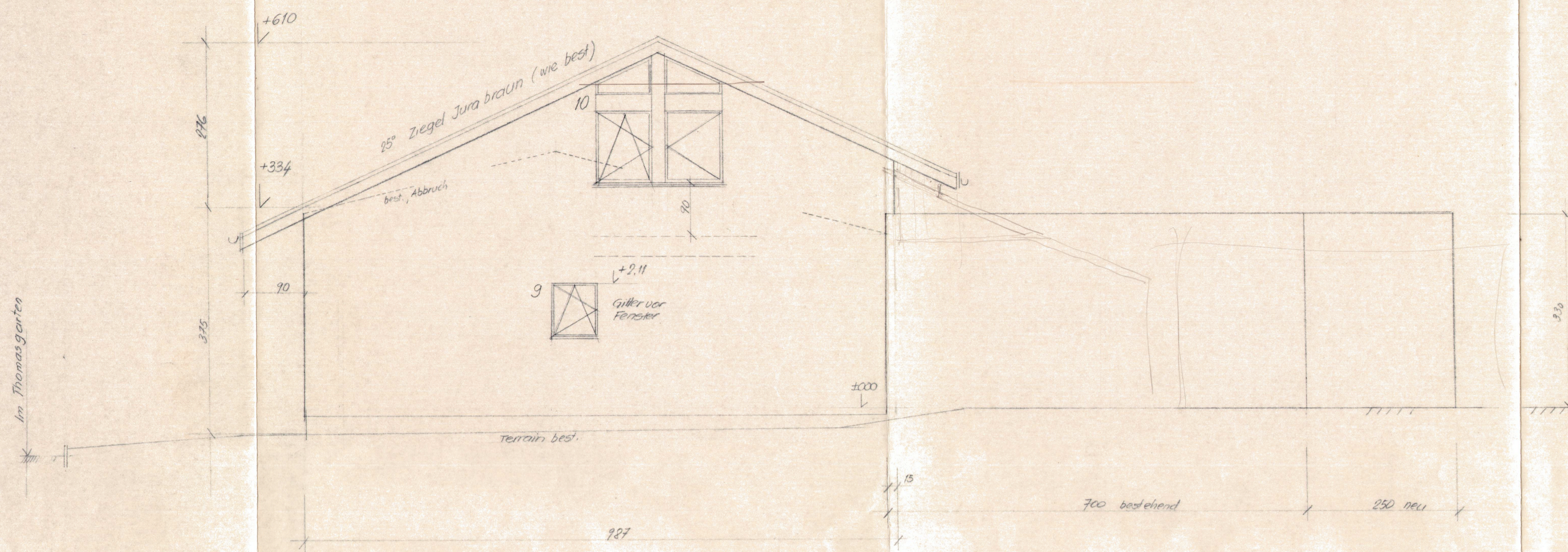
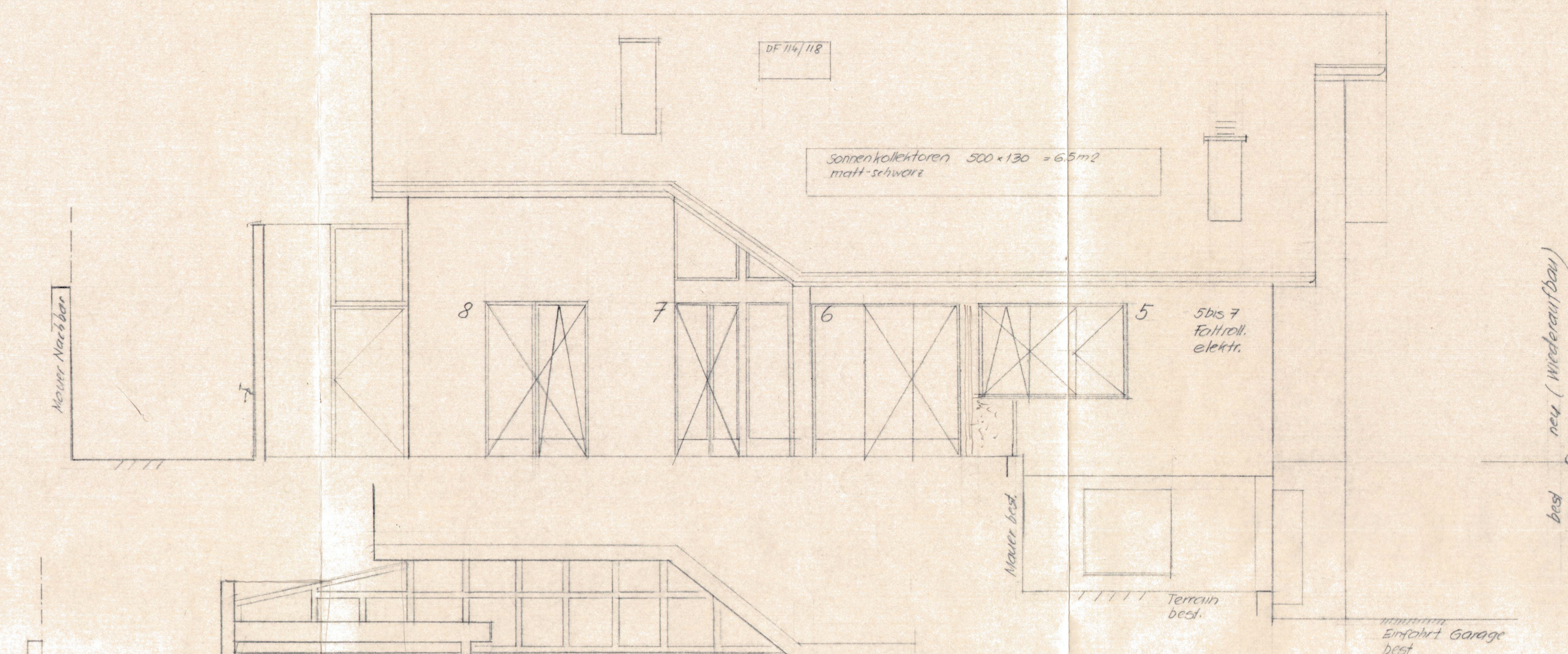


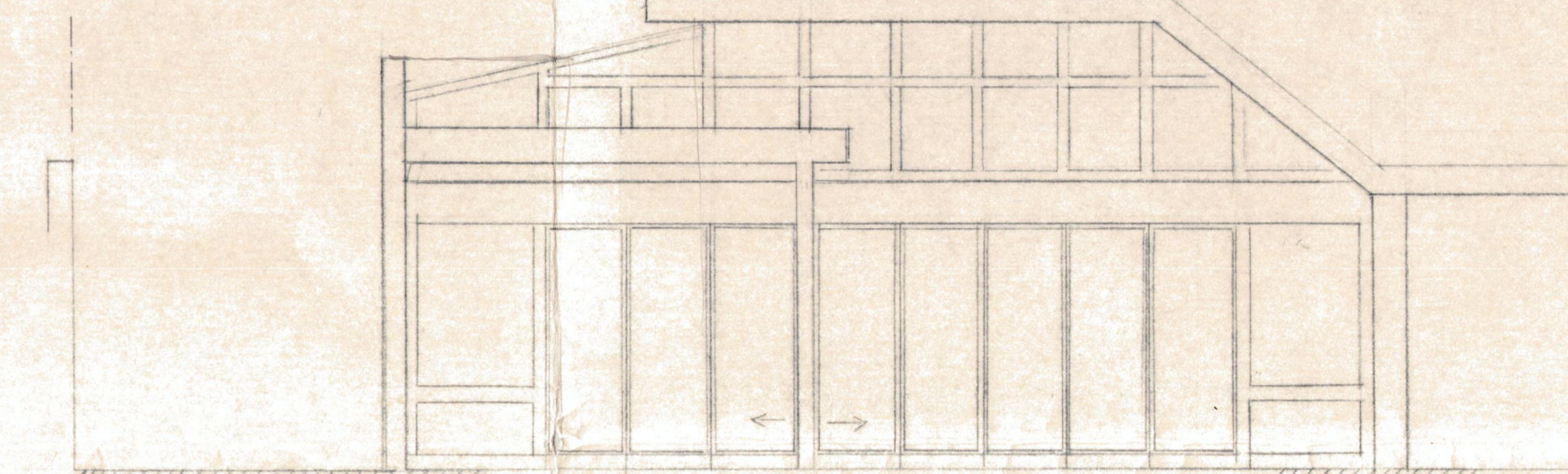
Nord



West entlang Hausfassade (ohne Wintergarten)

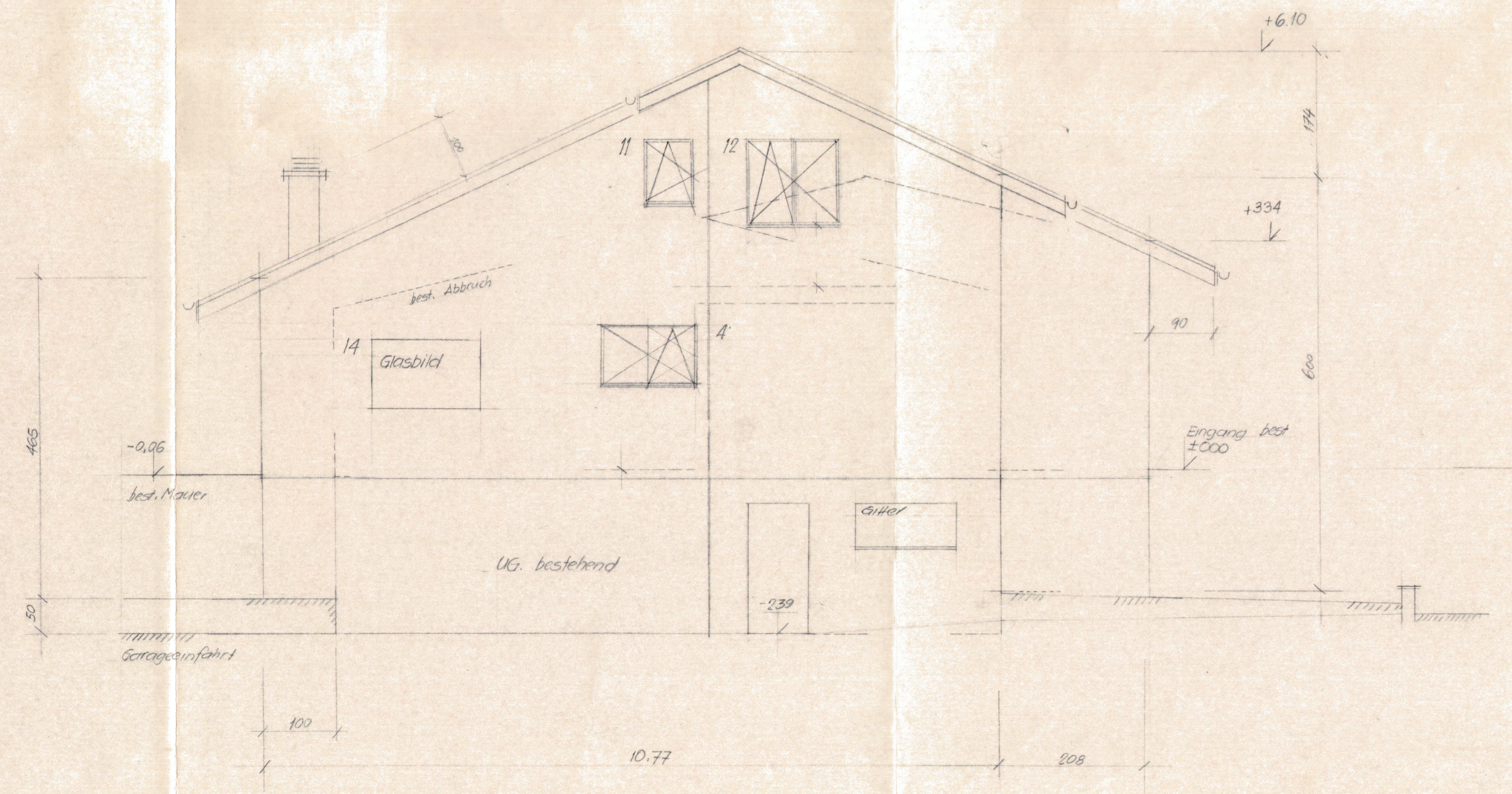


West Wintergarten

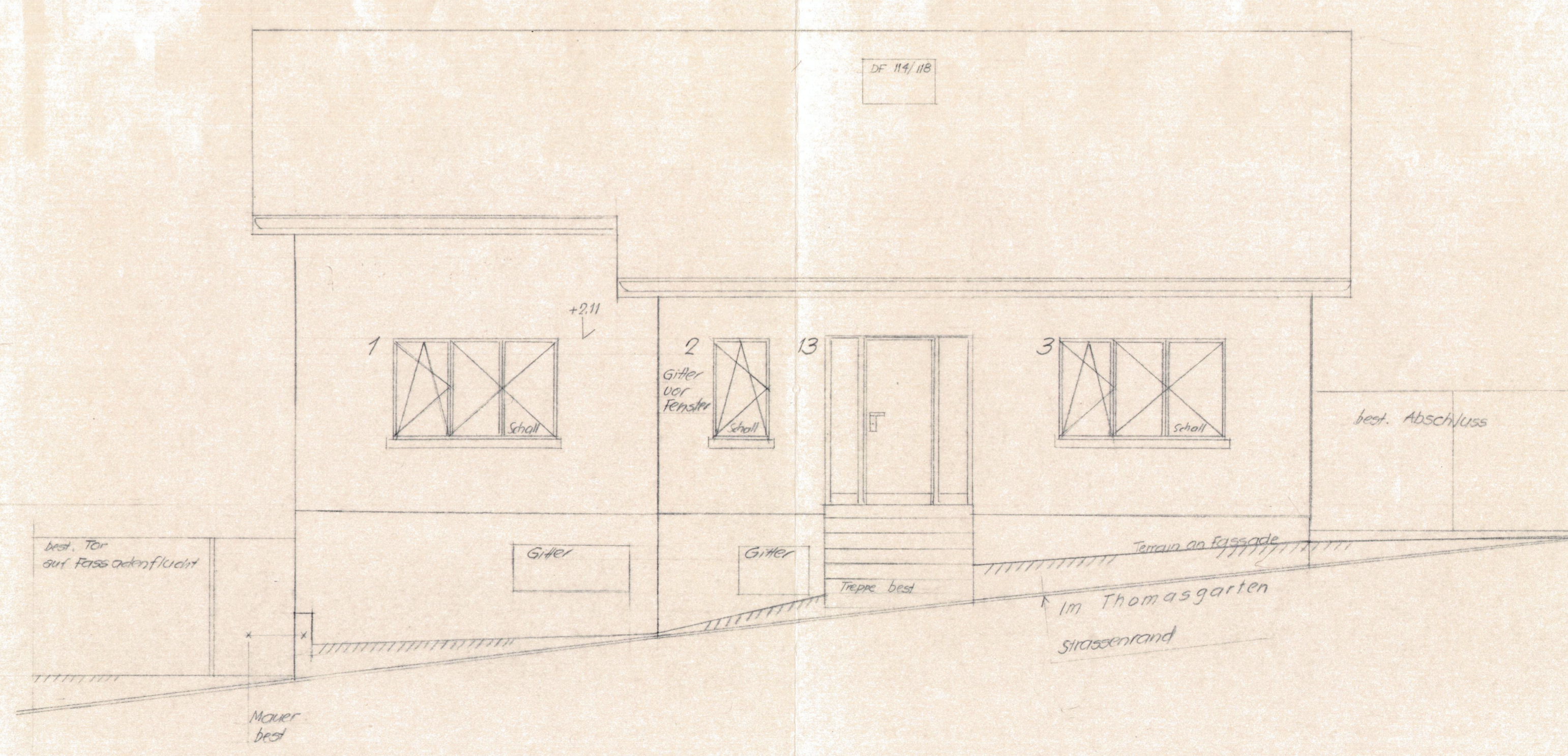


- best.
- neu
- Abbruch

Süd



Ost



DIE BAUHERRSCHAFT : Mauser
 DER PROJEKTVERFASSER : Hartmann

FRAU DENISE MAUSER, 4104 OBERWIL
 ANBAU + TEILNEUBAU IM THOMASGARTEN 13, 4104 OBERWIL

FASSADEN

KARL H. HARTMANN
 ARCHITEKTURBÜRO
 BASELWEG 43, 4146 HOCHWALD
 TELEFON : 78 55 78 / FAX : 78 33 91

REV.	DATUM	GEZ.	VIS.
b	14.4.96	Hg	
a	15.2.94	Hc	
	10.12.93	Hc	
PLANGRÖSSE: 60 / 105			
MASSTAB: 1 : 50			
PLAN-NR. A 114.o6			